

Two Mile Ash Initial Teacher Training Partnership (TMA ITT)

TMA ITT Partnership is currently the only primary based accredited provider of employment based teacher training directly serving Milton Keynes, now successfully into our eighth year. We are committed to recruiting and training skilled, competent teachers who, as far as possible, are from within the local community. We run a successful Graduate Teacher Programme, including a more flexible self-funded option, and an assessment programme for Overseas Trained Teachers to gain Qualified Teacher Status in the UK.

Supply Teaching Limited (STL)

Supply Teaching Limited was established in Milton Keynes in 2000 to provide a specialist service to schools and teachers in Beds, Bucks and Northants. Supply teachers are employed on a day to day basis to replace teachers who are absent for courses and illness. Longer term assignments are also arranged to cover situations like maternity leave. When working with Supply Teaching Limited, we can give you the experience of many schools. You will gain knowledge and skills of different groups of children and diverse styles and approaches. We have a large portfolio of teachers and schools ensuring a safe and reliable service. STL welcomes teachers from all over the world and provides an opportunity to place you into UK schools into the right position for you. We pride ourselves on being able to match the right teacher into the right school.

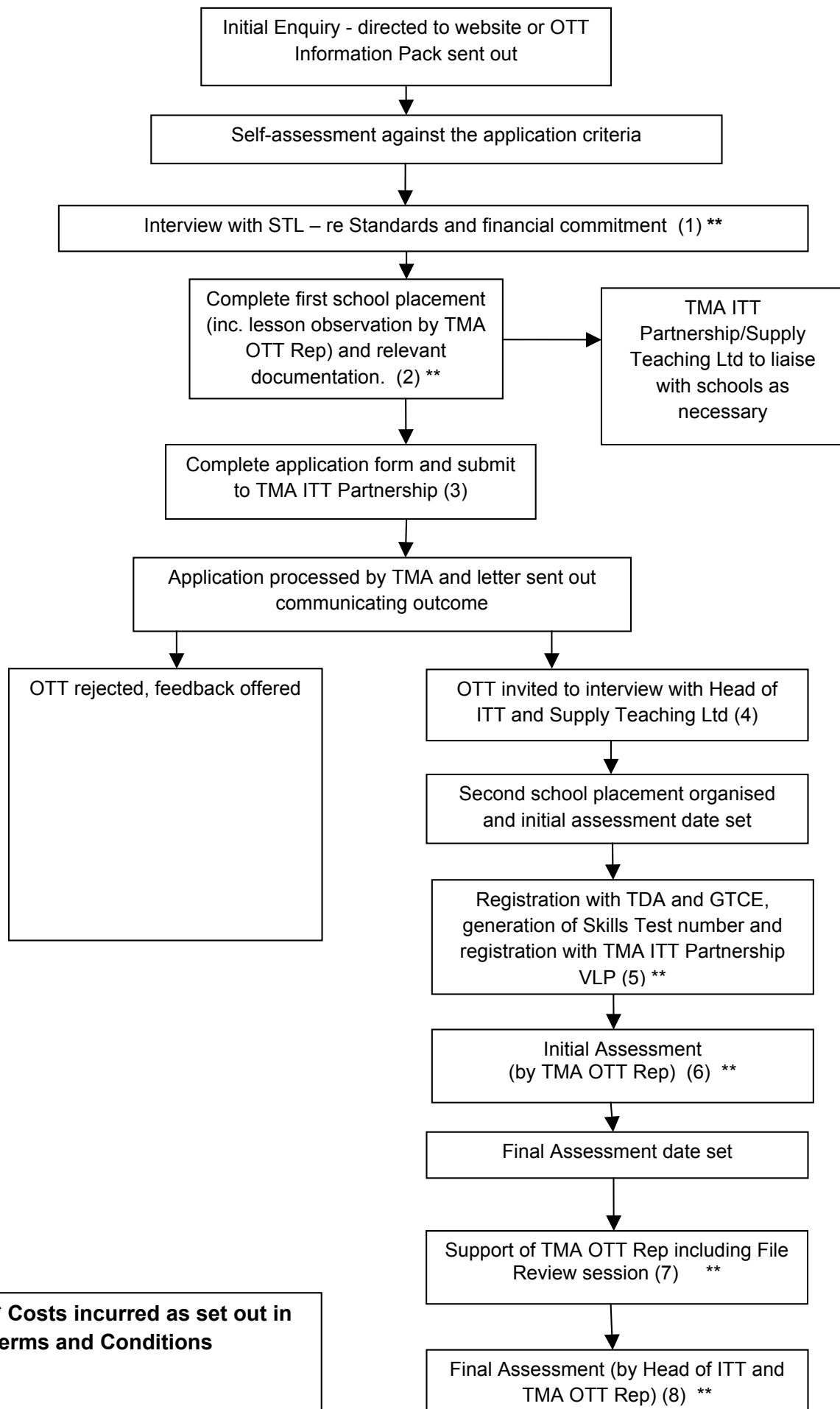
Overall aims

- To provide a high quality assessment programme which ensures a practical and relevant training experience for a career as a teacher in the primary age range (KS1 and KS2)
- For Overseas Trained Teachers to demonstrate good classroom practice, professional skills and knowledge in order to achieve Qualified Teacher Status
- To ensure that Overseas Trained Teachers demonstrate their ability to teach the core subjects of English, mathematics and science competently and independently in order to achieve Qualified Teacher Status
- To enable Overseas Trained Teachers to become creative, confident, committed and reflective practitioners and to equip teachers for teaching and learning in the 21st century in the UK
- To provide rich and supportive environments for individuals to develop their teaching abilities
- For Overseas Trained Teachers to have the highest expectations of both their own learning and the learning of their pupils

The OTT assessment programme

TMA ITT Partnership and STL are working together to provide overseas trained teachers with the opportunity to gain their UK Qualified Teacher Status - enabling them to work without the restrictions put upon them as an "unqualified teacher". This partnership is unique as it links mentoring and school-based support with professional knowledge and expertise from the TMA ITT Partnership, alongside the opportunity to continue working flexibly as a supply teacher through STL. STL will support you in your training and provide you with the essential teaching placements, while the TMA ITT Partnership will assess that you meet the Standards for QTS, as set out by the Secretary of State.

Structure of the programme



(1) Interview with STL

An informal discussion regarding the assessment programme, potential for success and expectations for first school placement. Financial commitments will be discussed as outlined in the Two Mile Ash Assessment Programme for OTTs in conjunction with Supply Teaching Terms and Conditions.

(2) First School Placement

A minimum of 6 weeks (or part time equivalent) to be carried out in a school willing to support the assessment programme and sign the Partnership Agreement. Evidence towards the Standards must be collated in a portfolio that will be presented at the Interview with Two Mile Ash ITT Partnership. This is to include literacy and numeracy attainment data illustrating the progress made by children that you are wholly accountable for. Lesson observations will provide some of the evidence base and must amount to 6 formal, graded observations across the 6 weeks. During week 2, one of these observations will be carried out by the TMA OTT Representative in conjunction with the school-based mentor to ensure consistency of grading. This evidence will then be taken into account by the school-based mentor when completing the Teaching Practice Profile at the end of the placement.

(3) Application Form

The OTT Application Form is to be completed and sent to Two Mile Ash ITT Partnership directly. A letter of acknowledgement will be sent either inviting to interview in January or July or providing feedback as to how the application might be strengthened.

(4) Interview with Head of ITT and Supply Teaching Ltd after first school placement.

The interview will enable assessments to be made on an OTT's Professional attributes, knowledge and understanding and will comprise the following interview activities:

- Reading to a class
- Maths test
- Writing test
- A half hour formal interview at Two Mile Ash School, with the Head of ITT and Supply Teaching Ltd.

(5) Registration with the Training and Development Agency for Schools

All personal details will be uploaded onto the TDA EBR Database and provisional registration with the General Teaching Council for England will be initiated. A registration number for the QTS skills tests will be generated and a time frame for the Assessment Programme will be estimated.

(6) Initial Assessment Procedure

The initial assessment at the second school (carried out by the TMA OTT Rep during week 2) will seek to confirm an Overseas Trained Teacher's potential to meet the Standards for Qualified Teacher Status and will allow judgements to be made on an OTT's Professional Skills. The assessment will comprise the following:

- A joint observation of core subject teaching with TMA ITT Partnership OTT Rep and school-based Mentor
- Discussion and moderation of lesson judgement with school-based Mentor

- Feedback to OTT
- Discussion with OTT regarding evidence collection
- Target setting

(7) Support of TMA OTT Rep

- Email and telephone support available from TMA ITT Partnership OTT Rep
- File review session (compulsory) with OTT Rep – this session will check evidence so far gathered in portfolio and any gaps identified so that they can be rectified before the final assessment
- Date set for final assessment

(8) Final Assessment Procedure

The Final Assessment for QTS will be in three parts:

- (i) A final observation carried out by the TMA OTT Rep in conjunction with the Head of ITT.
- (ii) Interview with OTT, Mentor and Head Teacher if necessary. Mentor records should be made available.
- (iii) Scrutiny of all portfolios of evidence presented for QTS. The Final Assessor will require:
 - Completed Standards Portfolio and all evidence files,
 - Verification that the QTS skills tests have been passed (Q16)
 - TMA ITT Partnership Teaching Practice Profiles (one from each school)
 - TMA ITT Partnership Observation Tracking form (indicating grades awarded for a minimum of six lessons from each placement)